

! Introduction To Soloing

This **UkuleleWorkshop** introduces you to six essential scales for creating solos.

! What is a Scale?

(From Wikipedia, the Online Free Encyclopedia) A scale is a set of musical notes in order by pitch, either ascending or descending. Scales may be described according to the intervals they contain, for example tonal, modal, diatonic, chromatic, synthetic.

! Essential scales

Essential scales are the first choice scales you need to improvise or create melodies. There are six essential scales that will get you through the majority of common progressions.

The six essential scales are the *Blues*, *Pentatonic*, *Dorian*, *Mixolydian*, *Aeolian*, *Ionian*.

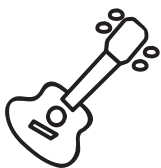
Of these six, the *Pentatonic* and *Blues* scales provide an easy start to soloing and creating melodies.

Scales can have alternate names. Alternate names are show in parentheses.

Here are the alternate names for the six essential scales.

- **Ionian** (Major)
- **Aeolian** (Natural Minor)
- **Dorian** (Minor)
- **Pentatonic** (Major Pentatonic, Country Scale)
- **Blues** (Minor Pentatonic)
- **Mixolydian** (Dominant)





! Reference Scales

From the Major and Natural Minor scale, all essential scale can be derived.

! C Major (Ionian)



A *C Major* contains only natural notes. These are the white keys of a piano. This is the melodic range of a ukulele in C tuning with a high “G” in open position,.

Each note (scale degree) of the major scale can be numbered, 1 through 8. This aides in learning other essential scales.

C	D	E	F	G	A	B	C
1	2	3	4	5	6	7	8

! C Natural Minor (Aeolian)

Based on the scale degree numbers of a C Major scale (1 2 3 4 5 6 7 8) a *C Natural Minor* scale contains a lowered third, sixth and seventh (b3, b6, b7).



QuickStart Scale Fingers for Ukulele

Six essential scales for ukulele. Covers the Blues, Pentatonic, Dorian, Mixolydian, Aeolian and Ionian scales for a standard “low G” tuned (G C E A) Soprano, Concert and Tenor ukulele.

Volumes covering C, D and G Tunings





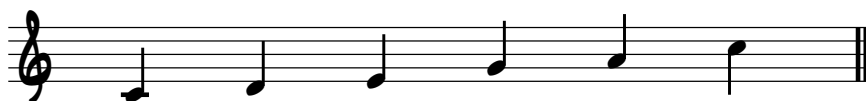
! Other Essential Scales from the Major and Natural Minor Scales

From the Major and Natural Minor scale we can get the Mixolydian and Dorian scales.

Major	C	D	E	F	G	A	B	C'
	1	2	3	4	5	6	7	8
Mixolydian	C	D	E	F	G	A	Bb	C'
	1	2	3	4	5	6	b7	8
Natural Minor	C	D	Eb	F	G	Ab	Bb	C'
	1	2	b3	4	5	b6	b7	8
Dorian	C	D	Eb	F	G	A	Bb	C'
	1	2	b3	4	5	b6	b7	8

! C Major Pentatonic

The pentatonic scale is a common scale used to write melodies and improvise. It is a great first scale to use on the ukulele as it contains only natural notes and lays very well in the open position of a high or low “G”, C tuned ukulele.



C **D** **E** **G** **A** **C'**
 1 2 3 5 6 8

One way to remember the sound of this scale to associate it with a melody or riff you might already know. The main riff of the Temptations classic “My Girl” is the C pentatonic scale. And the melody of *Camptown Races* uses all the notes of the C pentatonic scale.



QuickStart Scale Fingerings for Tenor & Baritone Ukulele Volume I, Key of G Tuning

Scale Fingerings for Tenor & Baritone Ukulele is a highly organized, efficient system of scale fingerings. Each fingering pattern is shown with a fingerboard shape, TAB and standard music notation. Related chords are also explained for each scale.





! Learning the Fingerings for a Scale

! Finger, String, Fret Notation

Here is one suggested fingering in the open position. Alternate fingerings are possible and should be explored.

Fingers:	open	2	open	3	open	3
----------	------	---	------	---	------	---

String:	③	③	②	②	①	①
Fret:	open	(2)	open	(3)	open	(3)

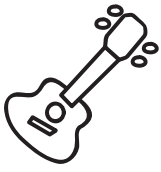
! Chord Grids and TAB

Chord grids can be used to show scales and are shown vertically or horizontally. TAB is typically shown with string four as the lowest string.

①	T				0	3
②	A			0	3	
③		0	2			
④	B					
		C	D	E	G	A C'

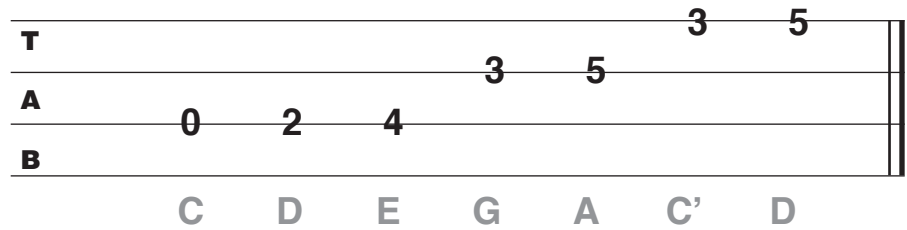
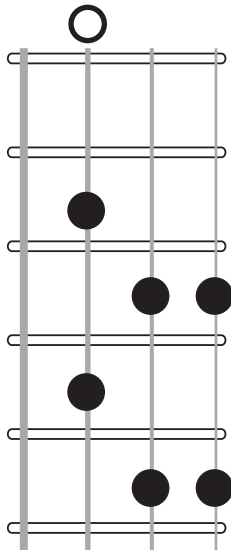
! Alternate Note Locations





An *Alternate Note Location* is the same pitch played on a different string and fret. These are duplicate notes and one of the reasons for the difficulty of reading or improvising on an instrument capable playing duplicate notes such as the ukulele.

Here are the same notes with some played at alternate locations.



A scale can be expanded below to root and above the octave using available scale notes. D is added above the octave C.

Multiple fingerings are possible and should be explored to achieve the desired musical effect.

! Getting The Sound Under Your Fingers

The ear doesn't need much more than one time to learn the sound of a scale or melody. Developing the motor skills and enforcing the connection between the ear and the hands is where all the practice time is needed.

Here are some suggested practice routines for a scale.

• Root to Octave, Ascending and Descending



• Octave to Root, Descending and Ascending

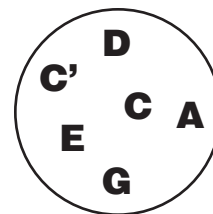




- Vary the Rhythm, short notes, long notes
- Start on any note and end on any note
- Add dynamics, louder, softer, glissandos (slides), slurs, legato, staccato ...

! Note Collections

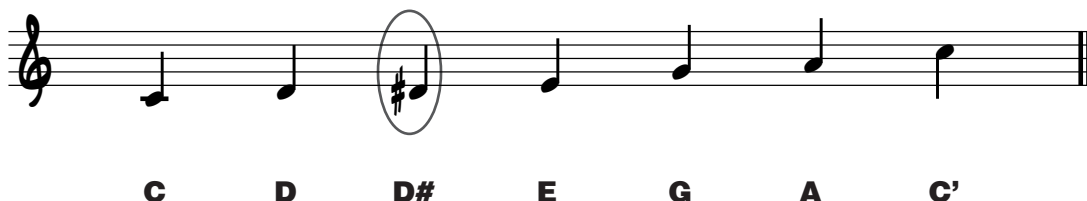
Think of the notes of a scale as a collection of pitches, using any order, starting on any note ending on any note, etc...



! Adding Notes

Any note can be added to a scale, some more common than others depending on the context.

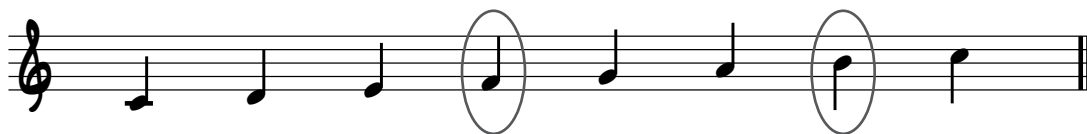
Add D# - This is a common chromatic tone added between the D and E.



Add Chord Tones - Any note not already in the scale that is in the current chord being played can be added to the scale. An example: the notes F, A and C are the chord tones of an F major chord. The A and C are already in the C pentatonic scale, the F can be added when the F chord is being played.

Add the B from the G chord (G B D).

With both B and F added we have the C Major scale.



Add Any Note - any note can be added to a scale depending on the context and rhythmic placement.

Adding a Bb gives the C pentatonic scale a bluesy feel.





! The Chords For C Pentatonic

Every scale has an associated chord or set of chords. For the C Pentatonic scale the chords are:

C	Dm	Em	F	G	Am	Bb
Cmaj7	Dm7	Em7	Fmaj7	G7	Am7	Bbmaj7

Chord Spelling

All chords are a collection of notes. Determining the notes of a chord allows you to added the notes that are in the chord to the current scale you are using.

C is C E G, **Dm** is D F A, **Em** is E G B, **F** is F A C, **G** is G B D, **Am** is A C E, **Bb** is Bb D F, **Cmaj** is C E G B, **Dm7** is D F A C, **Em7** is E G B D, **Fmaj7** is F A C E, **G7** is G B D F, **Am7** is A C E G, **Bbmaj7** is Bb D F A

QUICKSTART Scale Fingerings for Ukulele



Volume 1, C Tuning

Six essential scales for ukulele. Covers the Blues, Pentatonic, Dorian, Mixolydian, Aeolian and Ionian scales for a standard "low G" tuned (G C E A) Soprano, Concert and Tenor ukulele.

Scale Fingerings for Ukulele is a highly organized, efficient system of scale fingerings. Each fingering pattern is shown with a fingerboard shape, TAB and standard music notation. Related chords are also explained for each scale.

Master these fingerings and unlock your potential as a ukulele player.

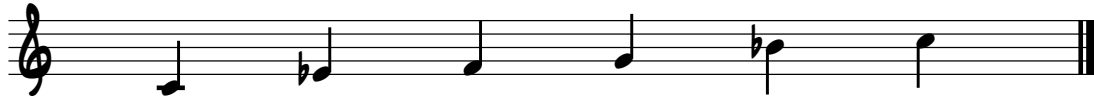
For More Information visit
www.CurtSheller.com





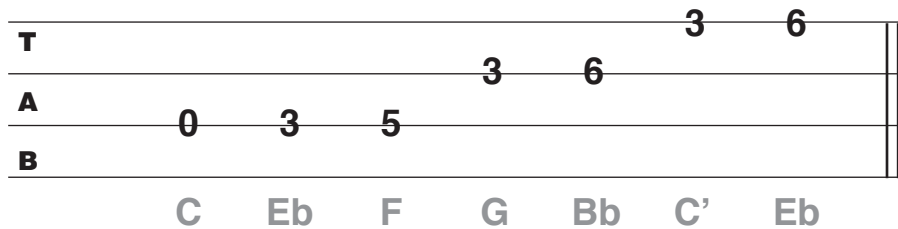
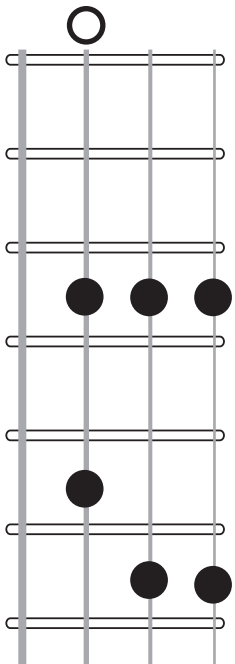
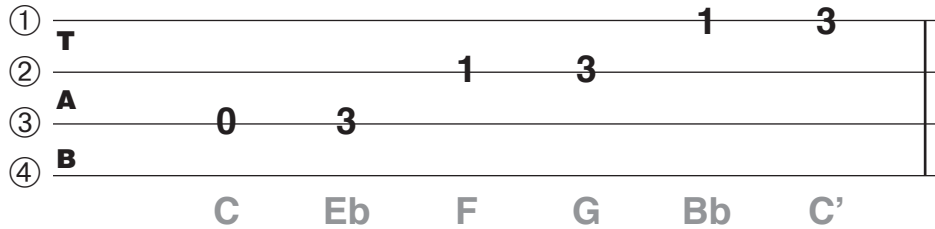
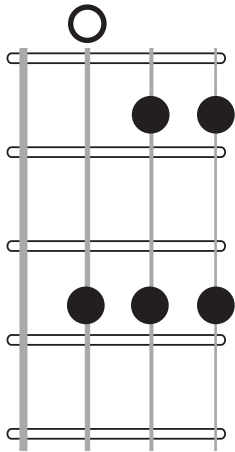
! C Minor Pentatonic aka C Blues

The minor pentatonic scale is another common scale used to write melodies and improvise with.



C Eb F G Bb C'

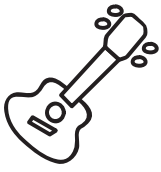
④ ③ ② ①



A scale can be expanded below to root and above the octave using available scale notes. Eb is added above the octave C.

Multiple fingerings are possible and should be explored to achieve the musical effect desired.

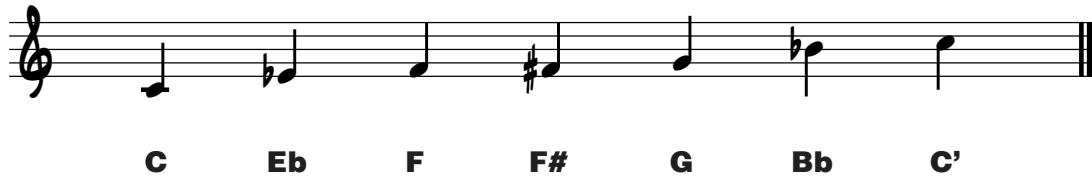




! Adding Notes

Any note can be added to a scale. Some will sound better then others depending on the context.

Add F# - This is a chromatic tone that can be added between F and G.



Add Chord Tones - Any note not in the scale already that is in the chord being played can be added to the scale (next section). An example: Fm - The Fm chord is contains the notes F Ab and C. The F and C are already in the scale and the Ab can be added when the Fm chord is being played.

Add the D from the Gm chord (G Bb D).

With both Ab and D added we have the C natural Minor scale.



The Chords For A C Blues Scale

Every scale has an associated chord or set of chords. for the C Blues it is:

C	Cm	C7	F	Fm	F7
G	Gm	G7			
Bb	Ab	Eb	Ebmaj7		

Chord Spelling

All chords are a collection of notes. Determining the notes of a chord allows you to added the notes that are in the chord to the current scale you are using.

C is C E G, **Cm** is C Eb G, **C7** is C E G Bb, **F** is F A C, **Fm** is F Ab C, **F7** is F A C Eb, **G** is B D F, **Gm** is G Bb D, **G7** is G B D F, **Bb** is Bb D F, **Ab** is Ab C Eb, **Eb** is Eb G Bb, **Ebmaj7** is Eb G Bb D.





One Octave C Pentatonic Scale Shapes

A few C Pentatonic scale shapes to get one going.

Scales are shown with the fret indication for the starting root. Like chords with no open strings, any scale can be transposed to additional keys.

